

LIZ

Welcome to Liz

A singular collection of 78 modern apartments
designed by Selldorf Architects.



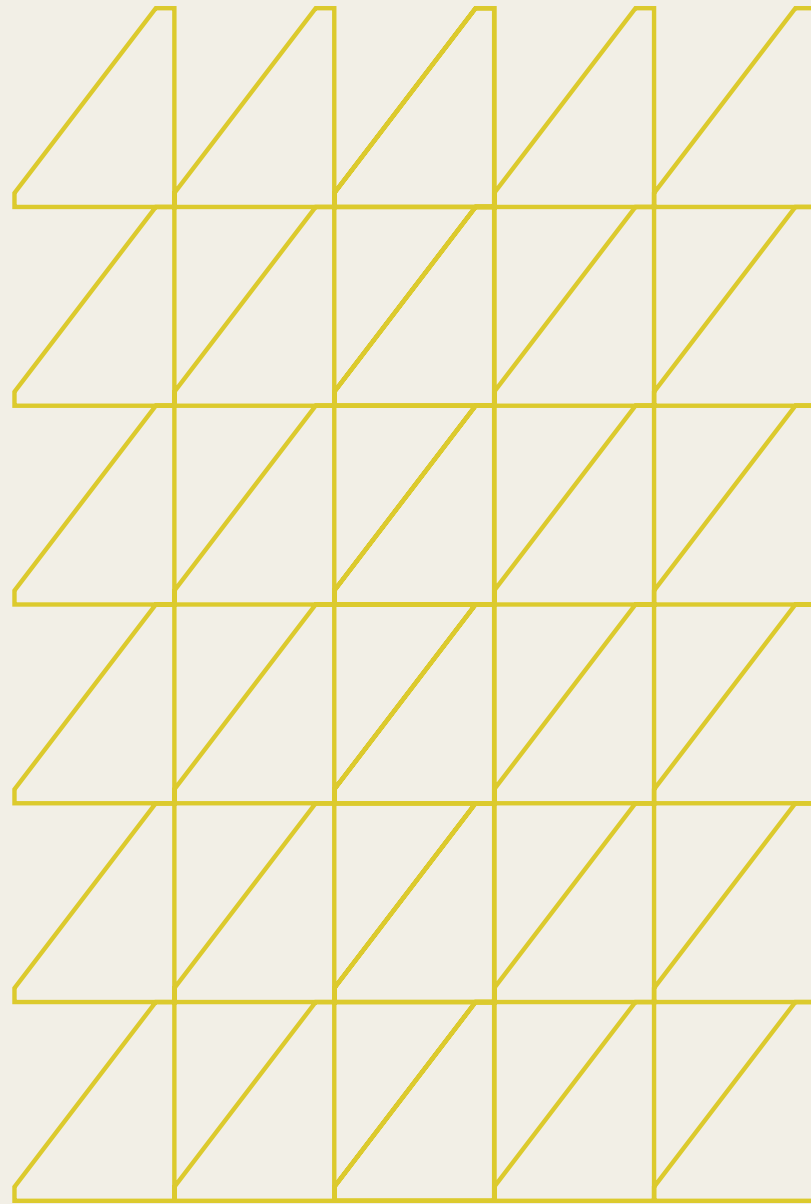


TABLE OF CONTENTS

⁸ Overview

¹² Residences

¹⁸ Services & Amenities

²² Architecture & Design

³⁰ Neighborhood

⁴⁰ Mission & Inspiration

⁵⁰ Development Team & Contact



Meet the New Modern

Life at Liz is your ideal blend of personal oasis and community connection. Bringing stunning home design, integrated modern services, and superior amenities to 14th Street, Liz sets the stage for a life of quiet luxury in the District's most inspiring neighborhood.



TRANSCENDENT HARMONY & CONTEMPLATIVE BEAUTY

Liz sets a new benchmark for boutique D.C. living. Behind our limestone edifice with colorful terracotta accents, and floor-to-ceiling glass windows, lies an urban oasis with a blend of premier features, personal services, and natural warmth. Extraordinary design and artful finishes create an elevated sense of home that resonates through every detail from rooftop lounge to private apartment terraces.

Selldorf Architects' first project in the District creates a feeling of arrival and harmony, opening the heart, mind, and spirit to the power of intention-led living. All of the elements align to activate a beautiful ecosystem of subtle refinement. Offering views of 14th Street and the D.C. skyline, these are homes that define modern poise and artisanal precision at the intersection of history, community, and purpose.



VISIONARY PUBLIC SPACES: A NEW COMMUNITY BEACON

Located on 14th Street between Dupont and Logan Circles, Liz is rooted in one of Washington D.C.'s most dynamic and inspiring neighborhoods. From culture to commerce to cuisine, our locale is a hub of modern activity with a timeless soul.

Connected to the fabric of Washington through lush greenery and community-centric public spaces, our residences mark a visionary leap forward for D.C. living. Featuring a reimagined tree-lined streetscape with ipe decking, sculptural installations and public seating spaces, Liz is designed to become a vibrant hub of interaction and cultural discovery.



Artfully Articulated Interiors

Each living space from studio to expansive two bedroom plus den is an expression of Selldorf Architects' elevated design sensibility – light-filled and peaceful with natural, modern finishes.



HOME

Liz is a model of luxurious, integrated home design. From self-irrigated landscaped terraces to soaring ceilings of up to 9'9", floor-to-ceiling window lines and superior condominium-level interior finishes, each element is thoughtfully positioned to elevate the living experience. A symphony of elegant craft resounds through fixtures and flooring, German appliances, and Italian cabinetry, exuding a sense of unparalleled elevation.



KITCHEN

Our kitchens channel a feeling of elevated serenity through light, luxurious finishes and exceptionally crafted built-ins. Custom, white Scavolini Sax cabinetry houses a fully integrated Bosch kitchen with gas cooktop, dishwasher and speed oven, Pietra Cardosa granite countertops, and a collection of Miele appliances.

BATHROOM

Featuring Vitreo Italian glass mosaic wall tile, our bathrooms are an expression of tranquility and refined sophistication. With light grey hues and natural materiality, each bathroom beautifully blends Waterworks fixtures, crystalized Glassos countertops and oversized cabinets, all centered around a luxurious, integrated shower or soaking tub (in select units).





William Wegman, *Low to High*, 2015

Services and Amenities

A collection of luxurious services, amenities, and curated custom art epitomizes consideration, and convenience for our residents. Step into a life designed with your utmost comfort and happiness in mind.



RESIDENT SERVICES

- 24-hour concierge to help coordinate and book personalized home care services including:
 - Dry cleaning
 - Dog walking & grooming
 - Housekeeping
 - Plant watering
 - Shoe polish and repair
 - Door-to-Kitchen groceries delivered to refrigerator and/or arranged on countertops
- Electronic concierge notification of dry cleaning and package delivery
- Resident design services from Ligne Roset and JANUS et Cie
- Assortment of daily newspapers

BUILDING AMENITIES

- Rooftop Lounge & Club Room overlooking 14th Street, the National Cathedral, and the Washington Monument
- Full gourmet catering kitchen in Club Room
- Resident storage units including complimentary cold storage for perishable deliveries
- Elegant ground level pocket parks and public art
- Bike storage room with repair station
- Reserved garage parking
- Rooftop gas grilling station
- Fitness center with Peloton cycles
- Automated package locker for universal deliveries
- Transit screen
- Pet friendly*

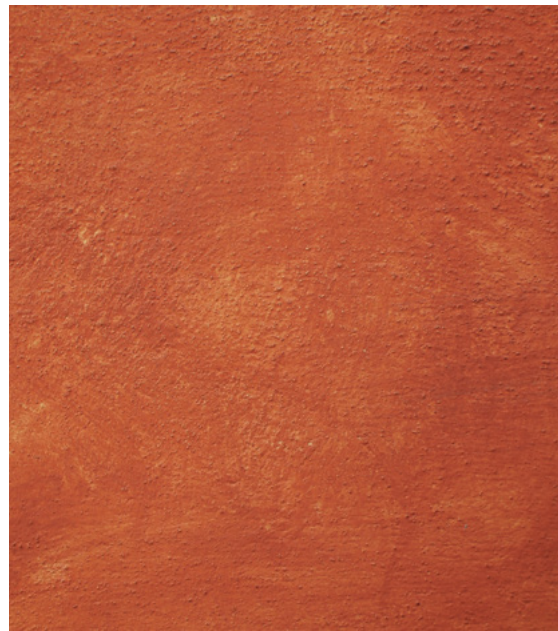


Architecture and Design

Visionary architecture and sustainable public spaces create a signature tableau of purpose-led luxury. From floor-to-ceiling windows to activated green spaces, our future-facing design is the standard-bearer for beautiful D.C. living.

Elemental

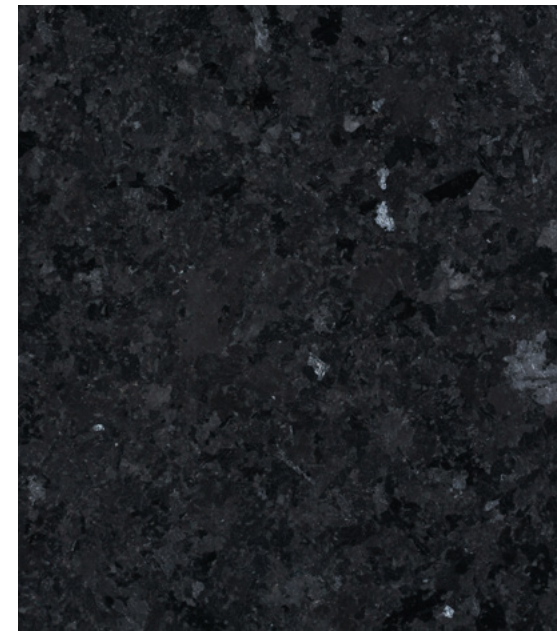
Activation



TERRACOTTA



PLANT LIFE



ABSOLUTE BLACK GRANITE



INDIANA LIMESTONE

“For us, good living space starts with a good floor plan that has logical layouts and space with good proportions and access to light and views. It is very important to us that our buildings contribute something back to the city, that they are as much for the people who will experience them from the outside as for the residents.”

ANNABELLE SELLDORF



SELLDORF ARCHITECTS

World-renowned Selldorf Architects creates public and private spaces that manifest a clear and modern sensibility to enduring impact. Known for their work on The Museum of Contemporary Art in San Diego, The Frick Collection, Brown University and art galleries including David Zwirner and Hauser & Wirth, this is their first space in Washington D.C.

FUTURE GREEN STUDIO

Thoughtful stewards of our changing climate and creative shapers of our built environment, they are at the forefront of Landscape Urbanism—a design movement that combines a deep understanding of plants, people, and places.



CORE ARCHITECTS

The firm has applied their co-creative design process to a wide range of environments and building types, including mixed-use developments, public buildings, large-scale office and residential developments, chef-driven restaurants, and hotel lobbies. As Executive Architect for Liz, CORE works closely with the project team to help shape the future of the 165,000 square feet mixed-use development.





14th Street Between Dupont and Logan Circles

Liz is creating an ecosystem of culture, public amenities and curated retail partners to anchor our residences in the newest block-long destination on 14th Street—Washington’s most sought-after neighborhood.



ON-SITE RETAIL



Surrounded by Michelin-starred restaurants, art galleries, coffee shops, local specialty stores, and a plethora of music venues, a vibrant community teeming with experiential possibility is at our doorstep. Our retail partners are specially curated to add to the fabric of 14th Street, Liz residents, and the community at large. Expect to see an array of cafes, specialty shops, and soft goods, including Sephora and Bluestone Lane Café.

WHITMAN-WALKER CULTURAL CENTER

For over 40 years, Whitman-Walker Health has been a sanctuary for the underserved populations of the Greater Washington area. Through multiple sites, staff provide stigma-free, culturally competent and vital healthcare to the gay, lesbian, bisexual, transgender, gender non-conforming and queer communities, as well to those living with or affected by HIV; and to individuals who cannot afford to pay or feel uncomfortable in other healthcare settings.



The Whitman-Walker Cultural Center is dedicated to honoring and exploring the human experience through the lens of art and activism.



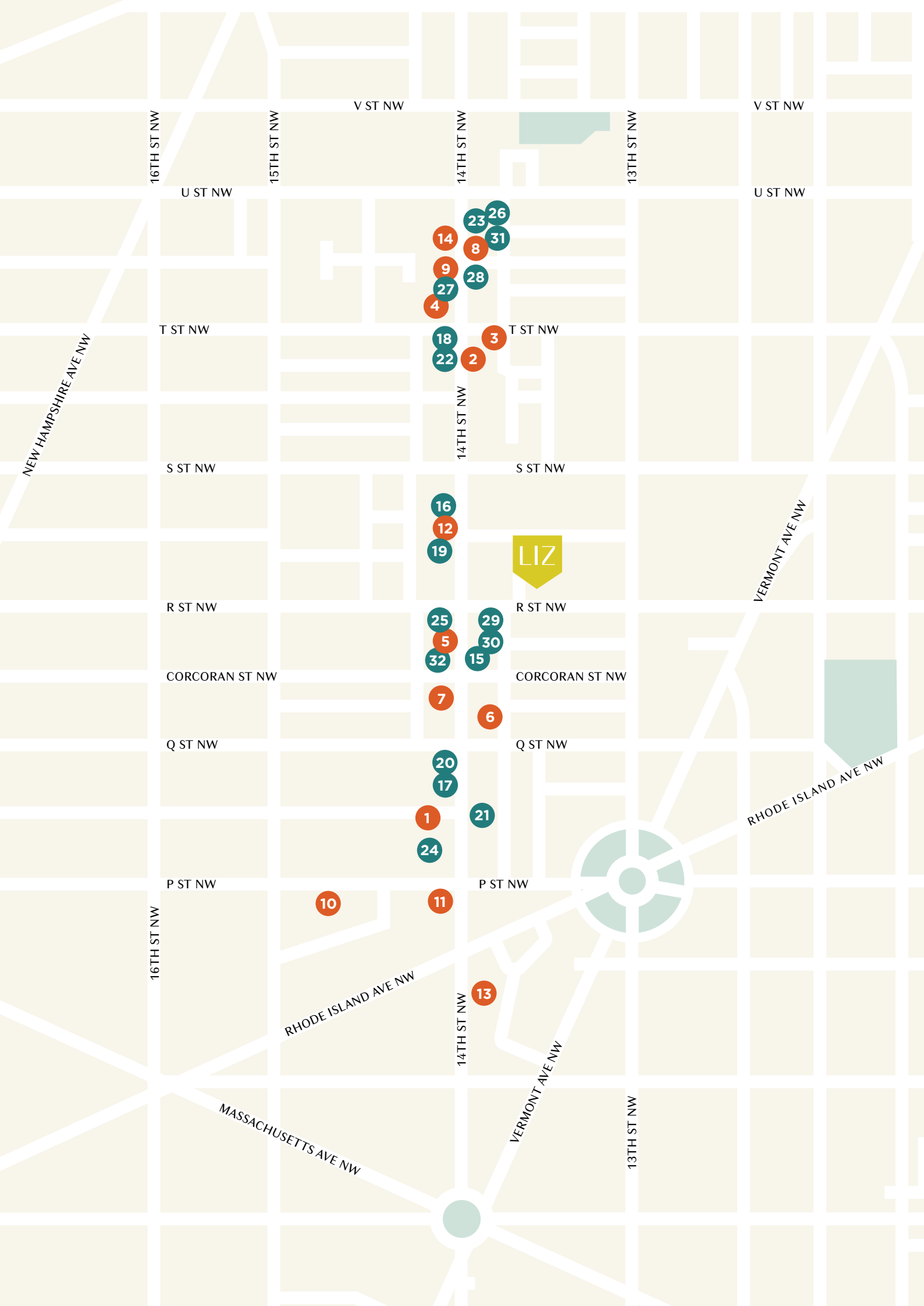
GOETHE-INSTITUT

The Goethe-Institut's new Washington headquarters located at Liz will provide a rich array of arts and cultural installations, film programs, language classes, reading rooms, lectures, discussions and more.



PUBLIC SPACES

Liz offers a dynamic, reimagined streetscape whose design includes a wood-deck plaza built to accommodate art installations, public spaces, seating areas, and community events.



Dining & Provisions

RESTAURANT/BAR

1. Estadio
2. Cafe Saint-Ex
3. Compass Rose
4. Bresca
5. Barcelona Wine Bar
6. Le Diplomate
7. Pearl Dive
8. Jeni's Splendid Ice Creams

GROCERY

9. Trader Joe's
10. Whole Foods

COFFEE

11. Dolcezza
12. Peregrine Espresso
13. Slipstream
14. The Wydown

Retail, Care & Culture

HOME

15. Salt & Sundry
16. West Elm
17. Mitchell Gold + Bob Williams
18. Room & Board
19. Flowers on 14th

GYM

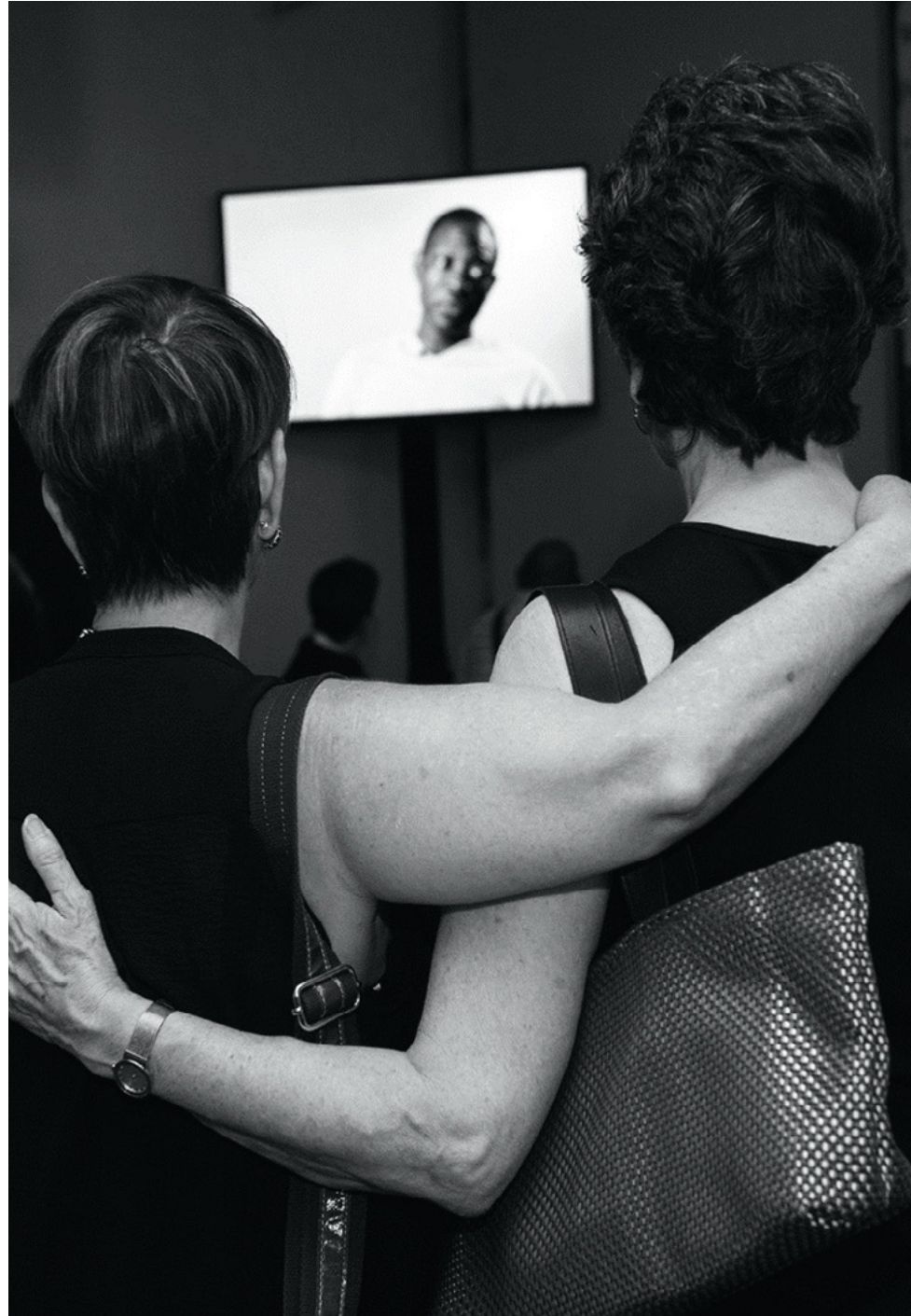
22. Barre3
23. SoulCycle
24. Zengo Cycle
25. Bodysmith
26. Orangetheory
27. Yoga District

GALLERIES

20. Gallery Neptune and Brown
21. Hemphill Fine Arts

APPAREL

28. Madewell
29. Shinola
30. Marine Layer
31. Lululemon
32. J.Crew Men's Shop



A Model with a Mission

Our development partnership provides support for Whitman-Walker Health's ongoing outreach initiatives.

“We are furthering our commitment to the neighborhood and celebrating our mission in a meaningful and sustainable way. Not only will we be able to keep our headquarters in the building, Liz will give us a unique opportunity to generate resources to support and expand services for many generations to come.”

DON BLANCHON,
CEO WHITMAN-WALKER HEALTH SYSTEM



FIVESQUARES DEVELOPMENT & WHITMAN-WALKER HEALTH

Liz is a home with a heart. Fivesquares Development's mix of imaginative design, urban planning and creative financing directly helps Whitman-Walker to further its community mission.

“At its core, the focus of Liz was to create a place unlike anything else in Washington: exquisite boutique living that artfully integrates beautiful design, culture, history and this vibrant mixed-use community in an exhilarating and truly personal way. There’s a spirit that we wanted to capture. A sense of arrival. A sense of warmth and generosity. A sense of purpose.”

ANDY ALTMAN, FIVESQUARES DEVELOPMENT



A CELEBRATED HISTORY



Constructed in 1904, the Belmont Garage was the first public automobile garage in Washington D.C. Its defining feature, large arched windows, has been preserved and restored at Liz.

Incorporating two iconic city structures, The Belmont Garage and Elizabeth Taylor Medical Center, Liz is built on a storied history of community service and cultural impact. In 1993, the Elizabeth Taylor Medical Center opened its doors to provide care for D.C.'s underserved communities.

“I call upon you to draw from the depths of your being to prove that we are a human race. To prove that our love outweighs our need to hate. That our compassion is more compelling than our need to blame. That our sensitivity to those in need is stronger than our greed. That our ability to reason overcomes our fear. And that at the end of each of our lives, we can look back and be proud that we have treated others with the kindness, dignity and respect that every human being deserves.”

ELIZABETH TAYLOR

A LEGACY REBORN



Liz honors the legacy and memory of Whitman-Walker’s Elizabeth Taylor Medical Center, a place that gave hope and care to generations of D.C.’s LGBTQ communities thanks in large part to a generous gift made by the one and only Elizabeth Taylor. Our residences channel the natural beauty, grace and spirit of this beloved actress and compassionate activist.

Team

Liz has been shaped by the imaginative approach of a team of visionaries who have crafted and executed this transformative mixed-use project that combines mission-focused development, urban planning, community engagement, and distinctive design and craftsmanship.

WHITMAN-WALKER HEALTH

For over 40 years, Whitman-Walker Health has been a sanctuary for the underserved populations of the Greater Washington area. Through multiple sites, staff provide stigma-free, culturally competent and vital healthcare to the gay, lesbian, bisexual, transgender, gender non-conforming and queer communities, as well to those living with or affected by HIV; and to individuals who cannot afford to pay or feel uncomfortable in other healthcare settings.

FIVESQUARES DEVELOPMENT

Fivesquares Development is passionate about shaping transformative real estate that inspires a unique sense of community through imaginative design, exhilarating gathering spaces and powerful partnerships. Their experience includes destination-makers like Washington's Anacostia Waterfront Revitalization (which framed developments like The Wharf and The Yards), City Center, Bethesda Row, Symphony Park and London's Olympic Park. The company is also currently developing a 2000-unit arts-focused residential community surrounding Grosvenor Metro in Bethesda, Md. in partnership with WMATA and Strathmore.

SELLDORF ARCHITECTS

GATES HUDSON

FUTURE GREEN STUDIO

URBAN PACE

CORE

CONTACT

Residence inquires:
leasing@lizdc.com

TEL – 202 836 9090
LIZDC.COM

1357 R STREET, NW
WASHINGTON, D.C. 20009



